



**About**

- Oversize fit complying with “retail” codes.
- Relaxed, comfortable and fashionable look.
- No label: 100% customisable for your brand.

85 % organic cotton / 15 % post-consumer recycled polyester. Combed cotton. Regular fit with dropped shoulders. 3-yarn LST (Low Shrinkage Terry: pre-shrunk) French Terry inner. 1/2 circle in the back. Enzyme-washed. Recycled metal zip with rounded pull. Two front patch pockets with flap. Double dart hood in main material. Organic cotton flat drawstring. Inner taped neck with herringbone. 1 x 1 ribbed finish cuffs. Single-needle overstitched finish on hem. Zip inner finished with Jersey bias tape.



**Sizes**



**More information**

**Logistic**



**Country of origin**



BD - Bangladesh

**Customs code**



61102099

**Colours**



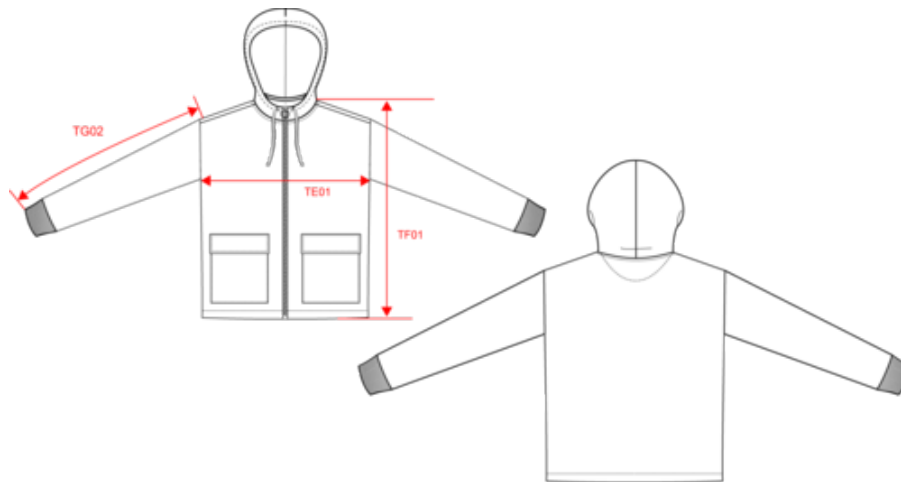
**Certifications**



## NS409

Eco-friendly ladies' French Terry full zip hooded sweatshirt

### Dimensions (cm)



Measurements in cm	XS	S	M	L	XL
TE01 - 1/2 chest width at 1.5cm below armhole	46.50	49.50	52.50	55.50	58.50
TF01 - Total height from HSP	52.00	54.00	56.00	58.00	60.00
TG02 - Long sleeve length	50.50	51.50	52.50	53.50	54.50

# NS409

## Eco-friendly ladies' French Terry full zip hooded sweatshirt

### Colours information



**Black**

RVB : 35,35,37  
Pantone C : Black  
Pantone TCX : 19-4004TCX



**Ivory**

RVB : 236,231,218  
Pantone C : 7534C  
Pantone TCX : 11-0701TCX



**Jade Green**

RVB : 143,167,162  
Pantone C : 5575C  
Pantone TCX : 16-5106TCX



**Organic Khaki**

RVB : 85,87,76  
Pantone C : 418C  
Pantone TCX : 19-0312TCX



**Petal Rose**

RVB : 197,159,155  
Pantone C : 7612C  
Pantone TCX : 15-1607TCX

### Logistic



5



20

Sizes	Width (cm)	Height (cm)	Length (cm)	Net weight (kg)	Gross weight (kg)	Pieces/Box	Pieces/Bundle
XS	40.00	30.00	60.00	9.6	11.3	20	5
S	40.00	30.00	60.00	10.1	11.8	20	5
M	40.00	30.00	60.00	10.6	12.3	20	5
L	40.00	35.00	60.00	11.3	13	20	5
XL	40.00	35.00	60.00	11.9	13.6	20	5