



About

- Made in Portugal.
- Made from more eco-friendly and more ethical organic cotton.
- No label: 100% customisable for your project.

100 % organic cotton. Made in Portugal. Ringspun combed cotton. Straight fit. Enzyme washed. French Terry inner. 1/2 circle in the back. Cover stitch on the neckline, armholes, cuffs and bottom hem. 1 x 1 rib cuffs, neckline and bottom hem. Inner taped neckline with herringbone. Garment dyed as a whole after assembly: colours vary between products. The colour may rub off on contact with light surfaces.

280 g/m<sup>2</sup> ♀♂

Sizes



More information

Logistic



5



20



Country of origin

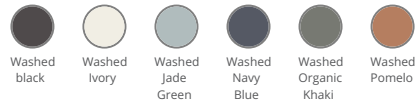
PT - Portugal

Customs code



61102099

Colours



Certifications



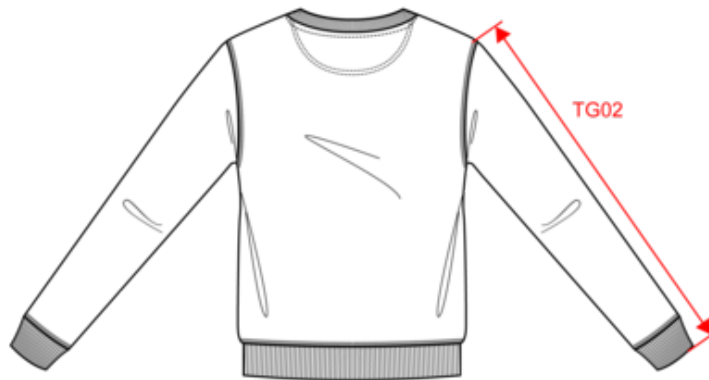
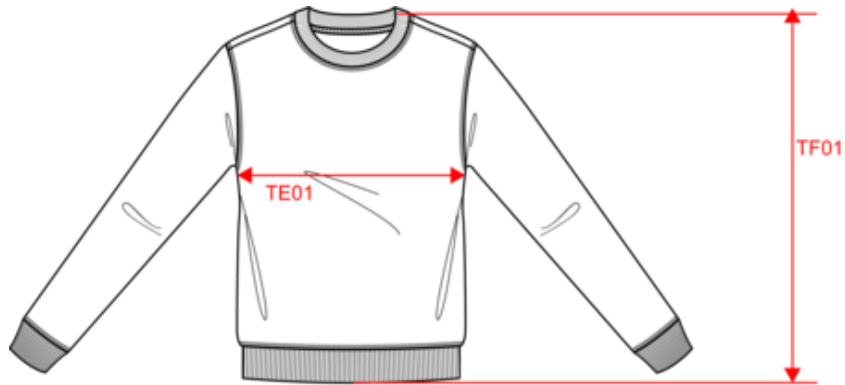
Organic  
Certified by Ecocert Greenlife,  
EGL N°185651 / NATIVE SPIRIT



# NS414

Eco-friendly unisex French Terry crew neck sweatshirt

Dimensions (cm)



Measurements in cm	XXS	XS	S	M	L	XL	XXL	3XL	4XL
TE01 - 1/2 chest width at 1.5cm below armhole	46.00	49.00	52.00	55.00	58.00	61.00	64.00	67.00	70.00
TF01 - Total height from HSP	65.00	67.00	69.00	71.00	73.00	75.00	77.00	79.00	81.00
TG02 - Long sleeve length	61.50	62.50	63.50	64.50	65.50	66.50	67.50	68.50	69.50

# NS414

## Eco-friendly unisex French Terry crew neck sweatshirt

### Colours information



**Washed black**  
 RVB : 43,39,42  
 Pantone C : Neutral Black  
 Pantone TCX : 19-4008TCX



**Washed Ivory**  
 RVB : 243,232,220  
 Pantone C : 7534C  
 Pantone TCX : 11-4202TCX



**Washed Jade Green**  
 RVB : 151,173,165  
 Pantone C : 5635C  
 Pantone TCX : 16-5304TCX



**Washed Navy Blue**  
 RVB : 54,61,75  
 Pantone C : 432C  
 Pantone TCX : 19-4023TCX



**Washed Organic Khaki**  
 RVB : 85,89,77  
 Pantone C : 418C  
 Pantone TCX : 19-0312TCX



**Washed Pomelo**  
 RVB : 174,98,83  
 Pantone C : 7522C  
 Pantone TCX : 17-1532TCX

### Logistic



5



20

Sizes	Width (cm)	Height (cm)	Length (cm)	Net weight (kg)	Gross weight (kg)	Pieces/Box	Pieces/Bundle
XXS	40.00	25.00	60.00	5.88000	7.28000	20	5
XS	40.00	25.00	60.00	6.38000	7.78000	20	5
S	40.00	25.00	60.00	6.94000	8.34000	20	5
M	40.00	25.00	60.00	7.84000	9.24000	20	5
L	40.00	25.00	60.00	8.32000	9.72000	20	5
XL	40.00	25.00	60.00	8.36000	9.76000	20	5
XXL	40.00	25.00	60.00	8.80000	10.20000	20	5
3XL	40.00	25.00	60.00	9.28000	10.68000	20	5
4XL	40.00	25.00	60.00	9.92000	11.32000	20	5