



About

- No label: 100% customisable to your project.
- 3-yarn LSF (Low Shrinkage Fleece) design: hard-wearing and wash-resistant.
- In sherpa: on-trend material.

85% organic cotton, 15% post-consumer recycled polyester. Product lined in ecru sherpa on all colours: hood, sleeves and body. Combed cotton. Straight fit. Enzyme-washed. French Terry 3-ply LST (Low Shrinkage Terry: pre-shrunk fleece). Centre front zip made from recycled metal. 1x1 rib bottom hem and cuffs. Matching herringbone taped neck inside collar. Twin-needle saddle over stitching on armholes, cuffs and hem. 2-panel hood with sherpa lining, over stitching and drawstring fastening. Kangaroo pocket. Round drawstring with recycled metal tips and eyelets. Zip for personalising bottom of garment. Half-circle at the back.

 580 g/m²

Sizes



More information

Logistic



BD - Bangladesh

Customs code



61102099

Certifications



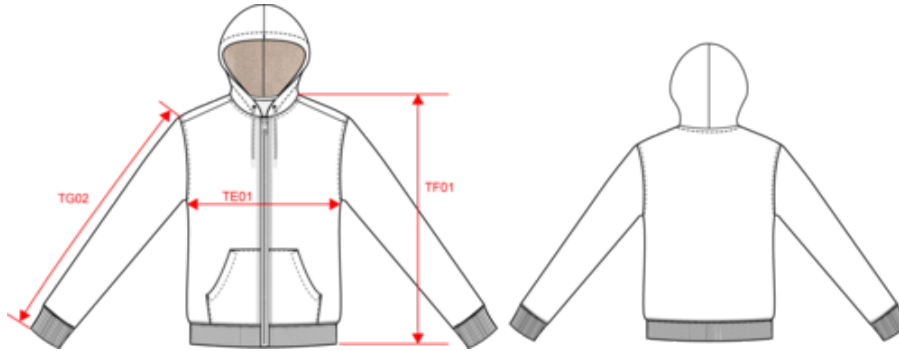
Colours



NS460

Eco-friendly unisex sherpa-lined full zip sweatshirt

Dimensions (cm)



Measurements in cm	XS	S	M	L	XL	XXL	3XL
TE01 - 1/2 chest width at 1.5cm below armhole	51.00	54.00	57.00	60.00	63.00	66.00	69.00
TF01 - Total height from HSP	68.00	70.00	72.00	74.00	76.00	78.00	80.00
TG02 - Long sleeve length	63.00	64.00	65.00	66.00	67.00	68.00	69.00

NS460

Eco-friendly unisex sherpa-lined full zip sweatshirt

Colours information



Black
 RVB : 35,35,37
 Pantone C : Black
 Pantone TCX : 19-4004TCX



Ivory
 RVB : 236,231,218
 Pantone C : 7534C
 Pantone TCX : 11-0701TCX



Moon Grey Heather
 RVB :
 Pantone C : Based on 7539C
 Pantone TCX : Based on 16-5101TCX



Navy Blue
 RVB : 41,45,57
 Pantone C : 433C
 Pantone TCX : 19-4010TCX

Logistic



1



10

Sizes	Width (cm)	Height (cm)	Length (cm)	Net weight (kg)	Gross weight (kg)	Pieces/Box	Pieces/Bundle
XS	40.00	38.00	60.00	9.2	10.9	10	1
S	40.00	38.00	60.00	9.7	11.4	10	1
M	40.00	38.00	60.00	10.2	11.9	10	1
L	40.00	40.00	60.00	10.8	12.5	10	1
XL	40.00	40.00	60.00	11.4	13	10	1
XXL	40.00	42.00	60.00	12.1	13.8	10	1
3XL	40.00	42.00	60.00	12.7	14.4	10	1