



About

- Water-repellent fabric.
- Wide fit and comfortable.
- No label: 100% customisable for your project.

100 % post-consumer recycled polyester. Regular fit. Level 4 water-repellent. 160gsm jersey lining. Taffeta sleeve lining to slip more easily onto the arms. 2 piped pockets and one inner pocket. Drawstring on bottom hem. Elasticated cuff. Tone-on-tone press stud fastening. Single over stitching on shoulders, armholes, hem and collar. Loop to hang the garment. Zip access for decoration on bottom hem and chest.

 75 g/m² 

Sizes

 XS S M L XL XXL 3XL

More information

Logistic

 5

Country of origin

 25





CN - China

Customs code



62014010

Colours

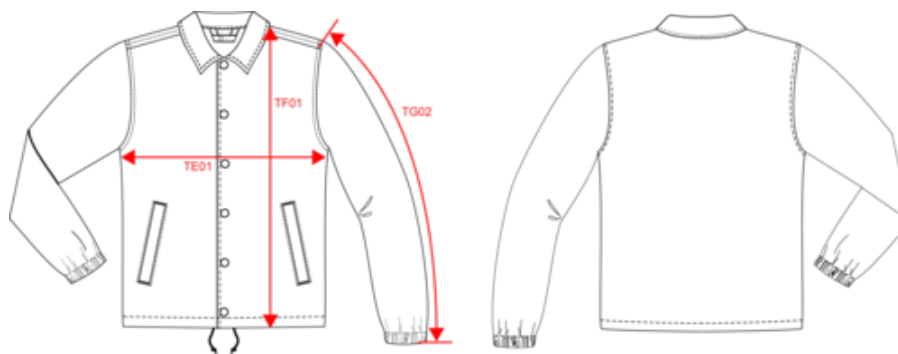
 Black  Navy Blue

Certifications



NS601
Eco-friendly unisex wind-breaker jacket

Dimensions (cm)



Measurements in cm	XS	S	M	L	XL	XXL	3XL
TE01 - 1/2 chest width at 1.5cm below armhole	53.00	56.00	59.00	62.00	65.00	68.00	71.00
TF01 - Total height from HSP	73.00	75.00	77.00	79.00	81.00	83.00	85.00
TG02 - Long sleeve length	63.50	64.50	65.50	66.50	67.50	68.50	69.50

NS601

Eco-friendly unisex wind-breaker jacket

Colours information

Black
 RVB : 35,35,37
 Pantone C : Black
 Pantone TCX : 19-4004TCX

Navy Blue
 RVB : 41,45,57
 Pantone C : 433C
 Pantone TCX : 19-4010TCX

Logistic



5



25

Sizes	Width (cm)	Height (cm)	Length (cm)	Net weight (kg)	Gross weight (kg)	Pieces/Box	Pieces/Bundle
XS	40	24	60	9.70	8.5	25	5
S	40.00	24.00	60.00	10.10	8.90000	25	5
M	40.00	24.00	60.00	10.50	9.30000	25	5
L	40.00	24.00	60.00	11	9.80000	25	5
XL	40.00	24.00	60.00	11.50	10.30000	25	5
XXL	40.00	24.00	60.00	12	10.80000	25	5
3XL	40.00	24.00	60.00	12.50	11.30000	25	5