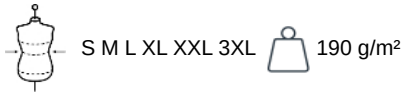


SP220

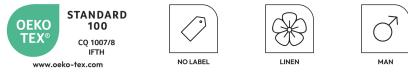
Men's linen polo shirt

- Made from linen, a lightweight and breathable material.
- Chic, relaxed style.

100% linen. Knit. Straight fit. Collar with collar stand and V-shaped buttonless polo shirt placket in main material. Double over stitching on cuffs and bottom hem. Side slits with inner taped neck finish in main material. Half-circle in the back.



Certifications

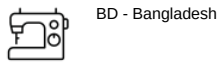


More information

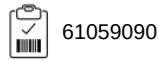
Logistic



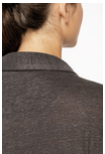
Country of origin



Customs code



Also available in version



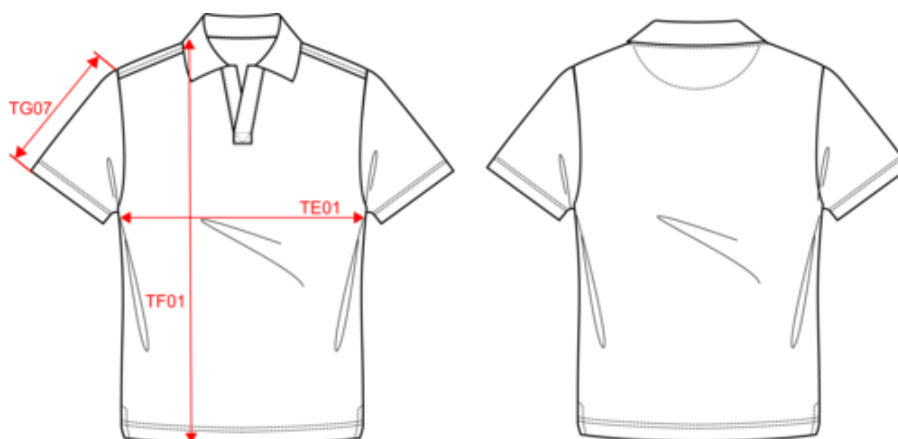
SP221



SP220

Men's linen polo shirt

Dimensions (cm)



Measurements in cm	S	M	L	XL	XXL	3XL
TE01 - 1/2 chest width at 1.5cm below armhole	49.00	52.00	55.00	58.00	61.00	64.00
TF01 - Total height from HSP	68.00	70.00	72.00	74.00	76.00	78.00
TG07 - Short sleeve length	21.50	22.25	23.00	23.75	24.50	25.25



SP220

Men's linen polo shirt

Colours information



Black
RVB : 35,35,37
Pantone C : Black
Pantone TCX : 19-4004TCX



Cool Blue
RVB : 103,131,156
Pantone C : 5415C
Pantone TCX : 17-4020TCX



Ivory
RVB : 236,231,218
Pantone C : 7534C
Pantone TCX : 11-0701TCX



Light Olive Green
RVB : 120,112,89
Pantone C : 7497C
Pantone TCX : 17-0517TCX



Navy Blue
RVB : 41,45,57
Pantone C : 433C
Pantone TCX : 19-4010TCX



Organic Khaki
RVB : 85,87,76
Pantone C : 418C
Pantone TCX : 19-0312TCX



Peacock Blue
RVB : 34,57,75
Pantone C : 7546C
Pantone TCX : 19-4125TCX



Stone Grey
RVB : 77,70,68
Pantone C : Black 7C
Pantone TCX : 19-0405TCX



Wet Sand
RVB : 164,146,128
Pantone C : 7536C
Pantone TCX : 17-1312TCX

Logisti



10



50

Sizes	Width (cm)	Height (cm)	Length (cm)	Net weight (kg)	Gross weight (kg)	Pieces/Box	Pieces/Bundle
S	40.00	20.00	60.00	8.28	9.55	50	10
M	40.00	20.00	60.00	8.5	9.8	50	10
L	40.00	20.00	60.00	8.75	10.05	50	10
XL	40.00000	20.00000	60.00000	9.25000	10.55000	50	0
XXL	40.00	20.00	60.00	9.75	11.05	50	10
3XL	40.00	20.00	60.00	10	11.3	50	10