

SP523

Ladie's Linen Bowling Collar Short-Sleeved Shirt

- Sustainable, thermoregulating and lightweight fabric
- Fashionable and hard-wearing

100% linen. Woven. Regular fit. Bowling neckline. Placket with white recycled plastic pearlised buttons in all colours and a facing inner finish. Lined back yoke. Single oversteitching on the cuffs and hem. Garment washed after assembly: colours may vary between products.



Certifications



More information

Logistic



Country of origin



Customs code



Also available in version



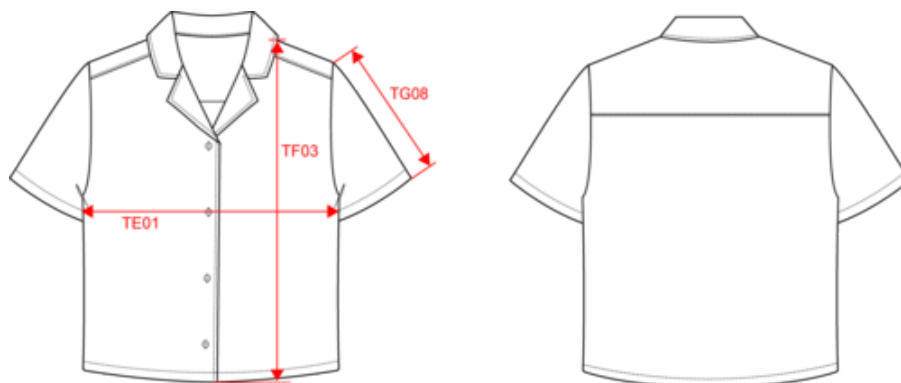
SP509



SP523

Ladie's Linen Bowling Collar Short-Sleeved Shirt

Dimensions (cm)



Measurements in cm	XS	S	M	L	XL
TE01 - 1/2 chest width at 1.5cm below armhole	47.00	50.00	53.00	56.00	59.00
TF03 - Front total height from HSP	57.50	59.50	61.50	63.50	65.50
TF07 - Back middle height	53.50	55.50	57.50	59.50	61.50
TG08 - Short sleeve length (rib excluded)	13.25	14.00	14.75	15.50	16.25



SP523

Ladie's Linen Bowling Collar Short-Sleeved Shirt

Colours information



Ivory

RVB : 236,231,218
Pantone C : 7534C
Pantone TCX : 11-0701TCX



Organic Khaki

RVB : 85,87,76
Pantone C : 418C
Pantone TCX : 19-0312TCX

Logistic



1



25

Sizes	Width (cm)	Height (cm)	Length (cm)	Net weight (kg)	Gross weight (kg)	Pieces/Box	Pieces/Bundle
XS	40.00	25.00	60.00	4.2	3.2	25	1
S	40.00	25.00	60.00	4.45	3.45	25	1
M	40.00	25.00	60.00	4.65	3.65	25	1
L	40.00	25.00	60.00	4.95	3.95	25	1
XL	40.00	25.00	60.00	5.15	4.15	25	1