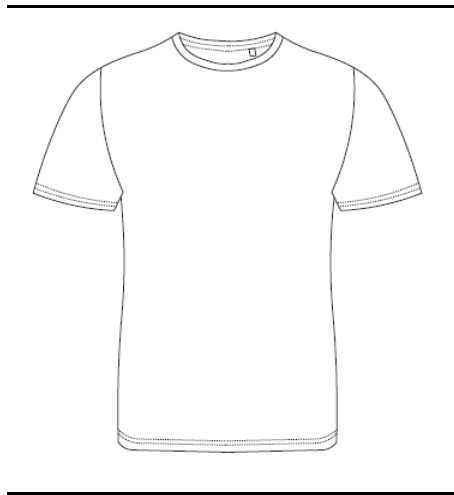


**NEW COLOURS &
SIZES A/W 2025**

Style Code: AT002

Style Name: AWDIs 180 T



Retail Copy:

The AWDIs T is more than just a t-shirt—it's the perfect complement to our iconic JH range. Designed to pair seamlessly with the JH001 College Hoodie, the AT002 redefines the value t-shirt by delivering exceptional quality, versatility, and style to the printing and embroidery market.

Available in sizes from S to 5XL, it's designed for everyone with the revolutionary PurePrint fabric at its core, exclusively developed to set a new industry standard. Made with our robust 180gsm PurePrint 180 fabric, it provides the ultimate print surface for outstanding results. Whether it's bold DTG designs, intricate screen prints, or stunning embroidery, PurePrint ensures every detail stands out with precision and clarity.

Colours:	CMYK References	Sizes
Airforce Blue	68/35/17/40	S-5XL
Arctic White	White	S-5XL
Baby Pink	0/30/2/0	S-5XL
Bottle Green	84/22/77/60	S-5XL
Burgundy	18/100/45/67	S-5XL
Cornflower Blue	59/27/0/0	S-5XL
Deep Black	73/67/61/67	S-5XL
Desert Sand	6/14/39/8	S-5XL
Dusty Lilac	50/47/32/16	S-5XL
Earthy Green	58/42/62/34	S-5XL
Fire Red	3/100/70/12	S-5XL
Heather Grey	13/9/10/27	S-5XL

Hot Pink	0/100/24/4	S-5XL
Kelly Green	93/0/100/0	S-5XL
Mocha Brown	16/29/38/53	S-5XL
Natural Stone	31/27/30/7	S-5XL
New French Navy	100/71/39/90	S-5XL
Orange Crush	0/56/90/0	S-5XL
Purple	84/99/0/12	S-5XL
Royal Blue	100/75/0/6	S-5XL
Sapphire Blue	99/50/0/0	S-5XL
Seafoam	60/23/30/5	S-5XL
Sky Blue	42/10/2/6	S-5XL
Solid Charcoal	66/57/51/52	S-5XL
Sun Yellow	0/9/100/0	S-5XL

Sizes to fit:	S	36"
	M	40"
	L	44"
	XL	48"
	XXL	52"
	3XL	56"
	4XL	60"
	5XL	64"

Fabric Name:	PurePrint
Fabric Content:	100% Better Cotton 90% Better Cotton, 10% Viscose - Heather Grey
Fabric Weight:	180gsm
Carton Qty:	S-XXL = 72 3XL-5XL = 36
Pack Qty:	6
Key Features:	Perfect match for the JH001 Relaxed fit Side seams Size label only, for easy rebranding Better Cotton PurePrint fabric Surface excellent for print or embroidery Taped back neck Ribbed crew neck Twin needle stitching details

Wash Care Instructions:	    
	Wash dark colours separately