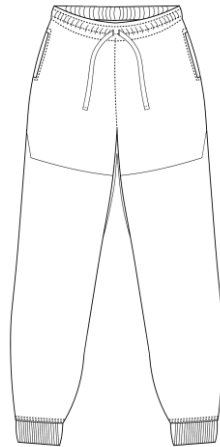


Just Cool Product Specification 2026

Issue 1

Style Code: JC307

Style Name: Adapt Fleece Jogpants



Retail Copy:

Built for movement, the Adapt Fleece Jogpants combine a relaxed, tapered fit with technical detailing for everyday performance. Made from soft interlock fabric with ergonomic panelling, they're designed for comfort and flexibility. Functional features include two side pockets, black drawcords with rubber-dipped ends, and a tearaway label for easy rebranding.

Colours:

French Navy

Grey

Jet Black

CMYK References

100 / 73 / 28 / 86

16 / 11 / 11 / 27

73/67/61/67

Sizes

XS-3XL

XS-3XL

XS-3XL

Sizes to fit

XS 28"

S 30"

M 32"

L 34"

XL 36"

XXL 38"

3XL 40"

Fabric Name:

Adapt Fleece

Fabric Content

74% Cotton, 21% Recycled Polyester, 5% Elastane

Fabric Weight:	325GSM
Carton Qty:	30
Pack Qty:	5
Key Features:	Relaxed, tapered fit Interlock fabric Ergonomic panelling Rubber dipped drawcord ends Two side pockets Black drawcords Tearaway label

Icons:



Wash Care Instructions



