



**About**

- Made in Portugal.
- Towelling material: comfortable and breathable.
- No label: 100% personalisable.

80% organic cotton / 20% post-consumer recycled polyester. Made in Portugal. Combed cotton. Towelling fabric. Enzyme washed. Regular fit. Tone-on-tone herringbone taped neck. Double-needle hem on sleeves and garment bottom. Patch belt with drawstring at the waist and embroidered eyelets for the drawstring passage. Front closure with recycled metal zipper. Two side pockets at the waist with pocket opening stitching. Half-circle in the back.

210 g/m<sup>2</sup>

**Sizes**



**More information**

**Logistic**



**Country of origin**



**Customs code**



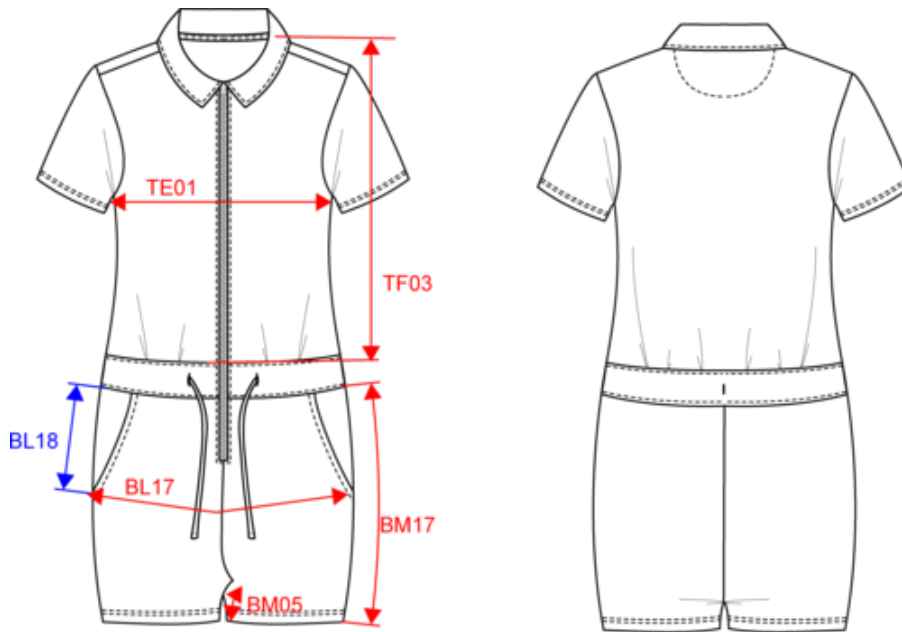
**Colours**



**Certifications**



Dimensions (cm)




Measurements in cm	XS	S	M	L	XL
BL17 - 1/2 hip width (measured parallel to waistband)	47.00	50.00	53.00	56.00	59.00
BL18 - Hip height from bottom of waistband	12.00	12.75	13.50	14.25	15.00
BM05 - Inseam length	11.00	11.00	11.00	11.00	11.00
BM17 - Side length (waistband excluded)	30.50	31.25	32.00	32.75	33.50
TE01 - 1/2 chest width at 1.5cm below armhole	45.00	48.00	51.00	54.00	57.00
TF03 - Front total height from HSP	45.50	47.50	49.50	51.50	53.50

# NS5002

## Eco-friendly ladies' Terry Towel zipped jumpsuit

### Colours information

 **Ivory**  
 RVB : 236,231,218  
 Pantone C : 7534C  
 Pantone TCX : 11-0701TCX

 **Malachite Green**  
 RVB : 0,111,83  
 Pantone C : 335C  
 Pantone TCX : 18-5338TCX

 **Pomelo**  
 RVB : 179,97,81  
 Pantone C : 7522C  
 Pantone TCX : 17-1532TCX

### Logistic



5



25

Sizes	Width (cm)	Height (cm)	Length (cm)	Net weight (kg)	Gross weight (kg)	Pieces/Box	Pieces/Bundle
XS	40.00	30.00	60.00	8.25	9.1	25	5
S	40.00	30.00	60.00	8.75	9.6	25	5
M	40.00	30.00	60.00	9.3	10.15	25	5
L	40.00	30.00	60.00	9.95	10.8	25	5
XL	40.00	30.00	60.00	10.45	11.3	25	5