



**About**

- No label: 100% customisable to your brand.
- Teddy collar and lightweight padding for added comfort.
- Lightweight recycled polyester padding for added comfort.

100% organic cotton. Lining: 100% recycled polyamide. Padding: 100% recycled polyester. Regular fit. Twill fabric. Sleeveless jacket padded with recycled polyester. 1 x 1 ribbed teddy collar. Kangaroo pocket. Front fastening with plastic zip and matching recycled metal pull tab. Matching quilted lining. Inside pocket with velcro, right-hand side. Main material customisation patch with inner garment hanging loop. Chest and hem zip for customisation.

 430 g/m<sup>2</sup>

**Sizes**



**More information**

**Logistic**



1



15



**Country of origin**

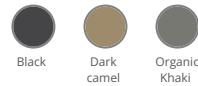
MM - Myanmar

**Customs code**



62023010

**Colours**



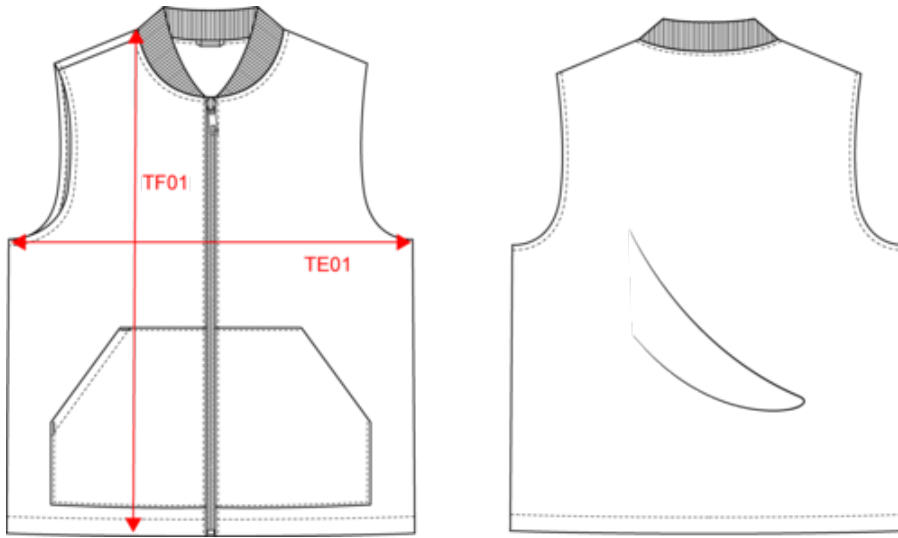
**Certifications**



NS623

Eco-friendly unisex padded twill bodywarmer with teddy collar

Dimensions (cm)





Measurements in cm	XS	S	M	L	XL	XXL
TE01 - 1/2 chest width at 1.5cm below armhole	49.00	52.00	55.00	58.00	61.00	64.00
TF01 - Total height from HSP	65.00	67.00	69.00	71.00	73.00	75.00

# NS623

Eco-friendly unisex padded twill bodywarmer with teddy collar

## Colours information

 **Black**  
 RVB : 35,35,37  
 Pantone C : Black  
 Pantone TCX : 19-4004TCX

 **Dark camel**  
 RVB : 137,110,83  
 Pantone C : 874C  
 Pantone TCX : 18-1018TCX

 **Organic Khaki**  
 RVB : 85,87,76  
 Pantone C : 418C  
 Pantone TCX : 19-0312TCX

## Logistic



1



15

Sizes	Width (cm)	Height (cm)	Length (cm)	Net weight (kg)	Gross weight (kg)	Pieces/Box	Pieces/Bundle
XS	40.00	25.00	60.00	6.9	8.3	15	1
S	40.00	25.00	60.00	7.4	8.8	15	1
M	40.00	25.00	60.00	7.9	9.3	15	1
L	40.00	25.00	60.00	8.4	9.8	15	1
XL	40.00	25.00	60.00	8.9	10.3	15	1
XXL	40.00	25.00	60.00	9.4	10.8	15	1