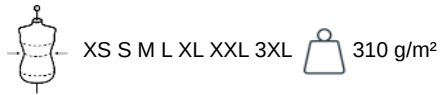


PA1008

Men's performance trousers

- Extremely comfortable fabric.
- Modern slim fit.
- Elasticated waistband with drawstring for a better fit.

94% polyester/ 6% elastane. (Heather colours 79% polyester/ 15% viscose/ 6% elastane). Extremely comfortable fabric. Elasticated waistband with two-tone drawstring with plastic tips. 2 front pockets with jersey lining in 65% polyester/ 35% viscose and 1 zipped pocket at the back with taped seams. Fashionable slim fit with knee patches. Leg ends with contrasting part elastic tape. Black on all colours and Dark Grey on Ash Heather.



More information

Logistic



CN - China

Customs code



62114390

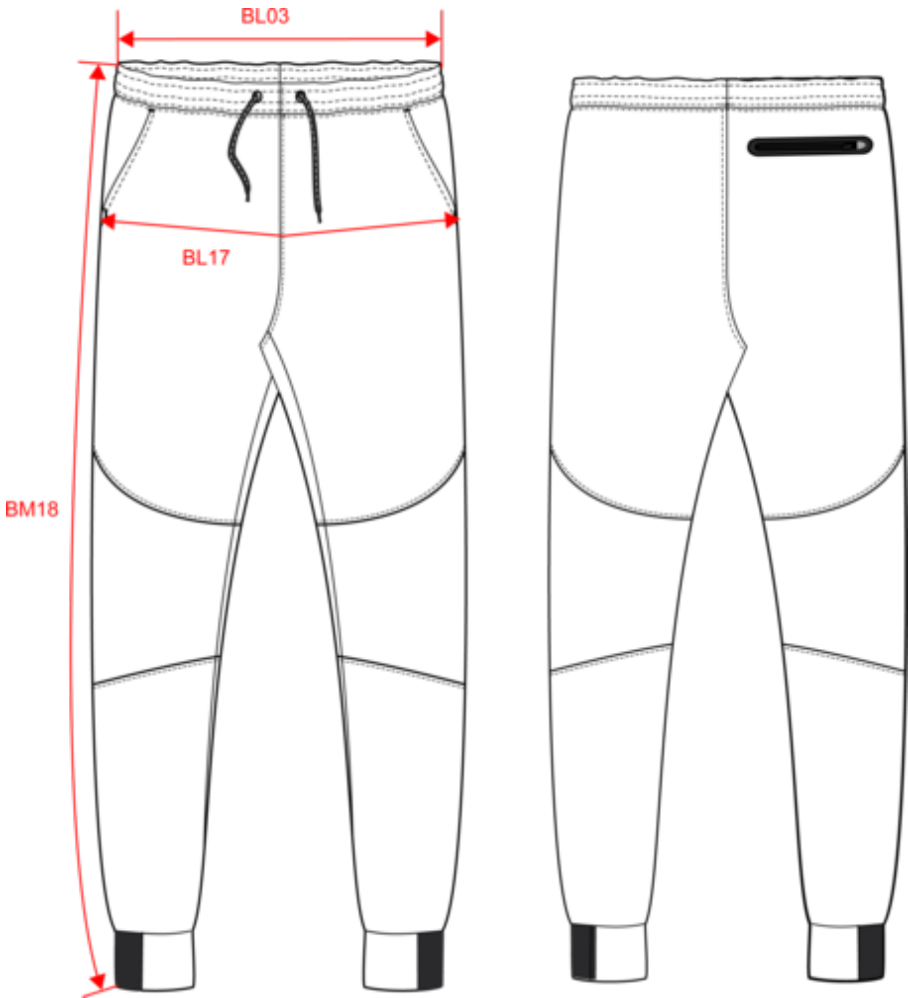
Also available in version



PA1009



Dimensions (cm)



Measurements in cm	XS	S	M	L	XL	XXL	3XL
BL03 - 1/2 elasticated waist width relaxed (front over back)	33.00	35.00	37.00	39.00	42.00	45.00	48.00
BL17 - 1/2 hip width (measured parallel to waistband)	45.75	48.75	51.75	54.75	57.75	60.75	63.75
BM18 - Side length (waistband included)	99.50	100.75	102.00	103.25	104.50	105.75	107.00

Colours information



Ash Heather
RVB :
Pantone C : Based on Warm gray
1C
Pantone TCX : Based on
13-4108TCX



Black
RVB : 35,35,37
Pantone C : Black / 425C
Pantone TCX : 19-4004TCX /
18-0201TCX



Deep Grey Heather
RVB :
Pantone C : Based on 447C
Pantone TCX : Based on
19-0000TCX



French Navy Heather
RVB :
Pantone C : Based on 432C
Pantone TCX : Based on
19-4009TCX



**Light Khaki
Heather**
RVB :
Pantone C :
Pantone TCX :

Logistic



1



20

Sizes	Width (cm)	Height (cm)	Length (cm)	Net weight (kg)	Gross weight (kg)	Pieces/Box	Pieces/Bundle
XS	40.00000	20.00000	60.00000	8.00000	9.00000	20	1
S	40.00000	20.00000	60.00000	8.40000	9.40000	20	1
M	40.00000	20.00000	60.00000	8.70000	9.70000	20	1
L	40.00000	20.00000	60.00000	9.40000	10.40000	20	1
XL	40.00000	20.00000	60.00000	9.80000	10.80000	20	1
XXL	40.00000	20.00000	60.00000	9.30000	11.30000	20	1
3XL	40.00000	20.00000	60.00000	9.70000	11.70000	20	1