

PA1009

Women's performance trousers

- Extremely comfortable fabric.
- Modern slim fit.
- Elasticated waistband with drawstring for a better fit.

94% polyester/ 6% elastane. (Heather colours 79% polyester/ 15% viscose/ 6% elastane). Extremely comfortable fabric. Elasticated waistband with two-tone drawstring with plastic tips. 2 front pockets with jersey lining in 65% polyester/ 35% viscose and 1 zipped pocket at the back with taped seams. Modern slim fit. Leg ends with contrasting part elastic tape Black on all colours and Dark Grey on Ash Heather.



XS S M L XL XXL



310 g/m²

More information

Logistic



1



20



CN - China

Customs code



62114390

Also available in version



PA1008



Ash
Heather



Black



Deep
Grey
Heather



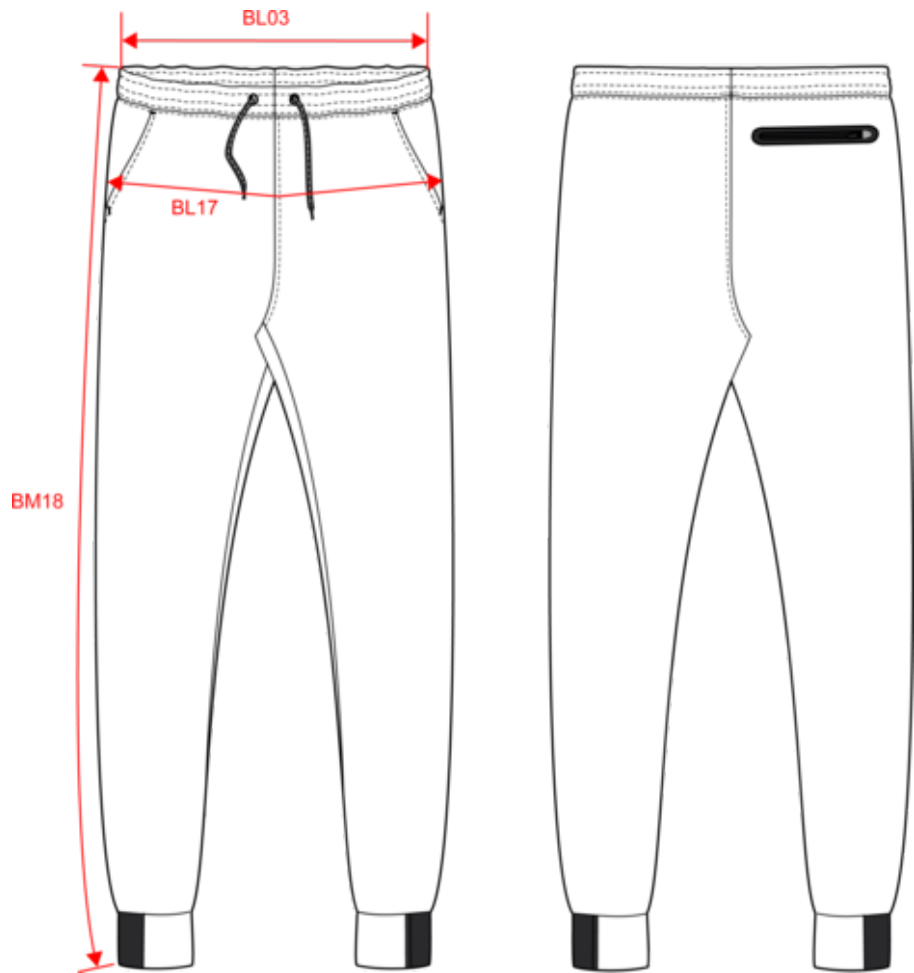
French
Navy
Heather



Light
Khaki
Heather



Dimensions (cm)



Measurements in cm	XS	S	M	L	XL	XXL
BL03 - 1/2 elasticated waist width relaxed (front over back)	33.00	35.00	37.00	39.50	42.00	44.50
BL17 - 1/2 hip width (measured parallel to waistband)	44.00	47.00	50.00	53.00	56.00	59.00
BM18 - Side length (waistband included)	98.00	99.00	100.00	101.00	102.00	103.00



PA1009

Women's performance trousers

Colours information



Ash Heather
RVB :
Pantone C : Based on Warm gray
1C
Pantone TCX : Based on
13-4108TCX



Black
RVB : 35,35,37
Pantone C : Black / 425C
Pantone TCX : 19-4004TCX /
18-0201TCX



Deep Grey Heather
RVB :
Pantone C : Based on 447C
Pantone TCX : Based on
19-0000TCX



French Navy Heather
RVB :
Pantone C : Based on 432C
Pantone TCX : Based on
19-4009TCX



Light Khaki Heather
RVB :
Pantone C :
Pantone TCX :

Logistic



1



20

Sizes	Width (cm)	Height (cm)	Length (cm)	Net weight (kg)	Gross weight (kg)	Pieces/Box	Pieces/Bundle
XS	40.00	20.00	60.00	7.30000	8.30000	20	0
S	40.00	20.00	60.00	7.70000	8.70000	20	0
M	40.00	20.00	60.00	8.10000	9.10000	20	0
L	40.00	20.00	60.00	8.50000	9.50000	20	0
XL	40.00	20.00	60.00	9.10000	10.10000	20	0
XXL	40.00	20.00	60.00	9.50000	10.50000	20	0