

PR151 'Colours Collection' Mid Length Apron

Description:

A mid-length Apron available in 36 colours from the Premier 'Colours Collection'. A plain coloured apron that has self –fabric ties long enough to double around the front.

Product Features:

- Mid length waist apron
- 90cm self-fabric ties

Available In:

One Size

Certifications:

Member

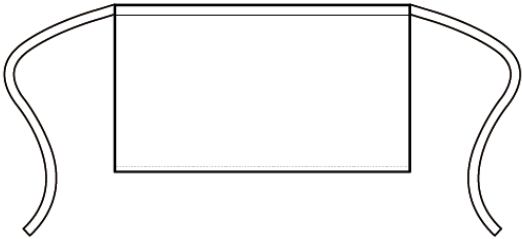
STANDARD
100
11-55731
Shirley

Colours:

Colour	Pantone	C	M	Y	K	Colour	Pantone	C	M	Y	K	Colour	Pantone	C	M	Y	K
Apple	361c	77	0	100	0	Mocha	7615c	50	61	57	13	Steel	431c	45	25	16	59
Aqua	344c	32	0	30	0	Natural	4755c	3	16	20	9	Sunflower	7411c	0	42	75	2
Aubergine	7449c	65	98	21	83	Navy	533c	95	72	15	67	Teal	3155c	100	9	29	47
Black	Black c	0	0	0	100	Oasis Green	5753c	42	16	80	58	Terracotta	7584c	0	70	100	17
Bottle	7484c	91	14	78	60	Olive	7763c	46	26	84	66	Turquoise	7703c	79	2	10	11
Brown	4975c	36	84	59	85	Orange	172c	0	73	87	0	White	White	0	0	0	0
Burgundy	209c	20	97	40	58	Pink	707c	0	36	8	0						
Chestnut	7581c	0	64	70	60	Purple	7447c	77	85	6	18						
Dark Grey	425c	52	29	30	78	Red	201c	7	100	68	32						
Emerald	7728c	93	0	75	55	Rich Violet	7677c	68	78	0	0						
Fuchsia	2046c	0	80	7	3	Royal	7687c	##	78	0	18						
Hot Pink	215c	66	100	26	24	Sage	5497c	38	9	23	32						
Khaki	7536c	11	13	30	32	Sapphire	2144c	95	53	0	0						
Lime	2304c	37	9	83	11	Silver	429c	21	11	9	23						
Marine Blue	2111c	86	65	21	26	Strawberry Red	199c	0	100	72	0						

Fabric:

65% Polyester, 35% Cotton Twill, 195gsm.



Suggested Decoration:

Screen Print, Transfer Print, Embroidery

Country of Origin:

China, Bangladesh, Egypt

Commodity Code:

6211431000

Features:



Wash Care:



Garment Sizes:

50cm long, 70cm wide.

Carton Information:

Sizes	Carton	Pack	SKU's	Carton Weight	Carton Dimensions
One size	72	12	36	15.1kg	60cm x 40cm x 22cm