

PR162 'Colours Collection' Contrast Bib Apron

Description

A classic full bib Apron with a contrast coloured panel appearing along the length of the right hand side. Featuring two slanted pockets to the side.

Product Features:

- Colour contrasting vertical panel
- Sliding adjustable buckle on self-fabric neck band
- Two front slanted pockets
- Self fabric ties

Available In:

One Size

Certifications:

Sedex Member

OEKO  
TEX®

STANDARD  
100  
11-55731  
Shirley

Colours:

Colour		Pantone	C	M	Y	K
Black/ Dark Grey	Black	Black c	0	0	0	100
	Dark Grey	425c	52	29	30	78
Black/ Hot Pink	Black	Black c	0	0	0	100
	Hot Pink	215c	66	100	26	24
Black/ Lime	Black	Black c	0	0	0	100
	Lime	2304c	37	9	83	11
Black/ Red	Black	Black c	0	0	0	100
	Red	201c	7	100	68	32
Black/ Purple	Black	Black c	0	0	0	100
	Purple	7447c	77	85	6	18
Black/ Turquoise	Black	Black c	0	0	0	100
	Turquoise	7703c	79	2	10	11
Brown/ Natural	Brown	4975c	36	84	59	85
	Natural	4755c	3	16	20	9

Fabric:

65% Polyester, 35% Cotton Twill, 195gsm.

Suggested Decoration:

Screen Print, Transfer Print, Embroidery

Country of Origin:

China, Bangladesh, Egypt

Commodity Code:

6211431000

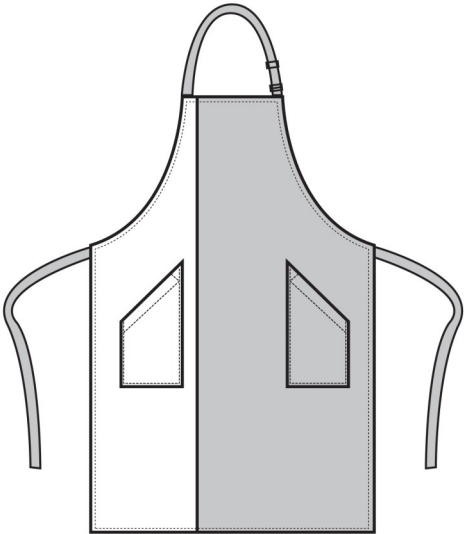
Features:

EASY  
CARE

\*

↑

BLEACH RESISTANT



Wash Care:

60°

X

●

●

X

85°

Carton Information:

Sizes	Carton	Pack	SKU's	Carton Weight	Carton Dimensions
One Size	72	12	7	10.8kg	60cmx61cmx24cm

Garment Sizes:

86cm long, 72cm wide

Pocket Measurement: 16cm width, 24cm depth