

PR305 Women's Poplin 3/4 Sleeve Blouse

Description

A semi fitted blouse for women that offers a fashionable three-quarter length sleeve. The sleeve is finished off with a neat vented cuff and the bust and back area offers a flattering cut that gives the blouse its fitted appearance.

Product Features:

- Soft collar styling
- Rounded bottom hem
- Feminine fit style with bust and back darts.
- Three quarter sleeves with vented cuff

Available In:

6 (Black & White Only), 8, 10, 12, 14, 16, 18, 20, 22, 24, 26

Certifications:

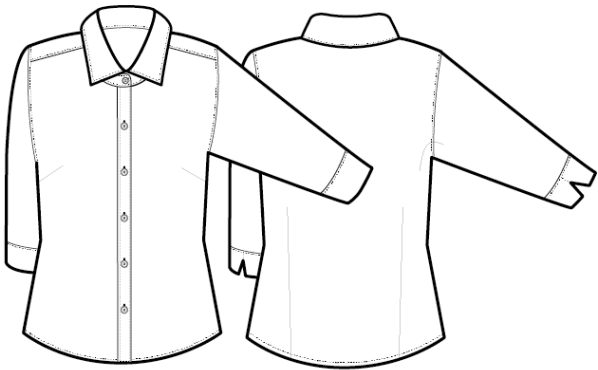


Colours:

Colour	Pantone	C	M	Y	K
Black	Black c	0	0	0	100
Light Blue	2707c	20	6	0	0
Mid Blue	2135c	62	39	0	0
Silver	429c	21	11	9	23
White	White	0	0	0	0

Fabric:

65% Polyester, 35% Cotton Poplin,
105gsm.
White: 115gsm.



Suggested Decoration:

Screen Print, Transfer Print, Embroidery

Country of Origin:

Bangladesh

Commodity Code:

6206400000

Features:



Wash Care:



Carton Information:

Sizes	Carton	Pack	SKU's	Carton Weight	Carton Dimensions
6 - 20	36	6	147	8.3kg	58cm x 38cm x 19cm
22 - 26	12	3	17	3.7kg	58cm x 38cm x 15cm

Garment Sizes:

Size	6	8	10	12	14	16	18	20	22	24	26
Bust to fit"	31	33	35	37	39	41	43	45	47	49	51
Bust to fit cm	79	84	89	94	99	104	109	114	119	124	129
Bust actual cm	91	93	98	103	108	113	118	124	131	136	141
Call size	2XS	XS	S	M	L	XL	2XL	3XL	4XL	5XL	6XL
Back length cm	63	63	64	65	65	66	66	67	67	68	68