

PR319 Women's Cotton Rich 'Comis' Tee

Description

A popular style for service staff, this women's short sleeve t-shirt is made from a combination of recycled polyester and cotton. Designed with a single button on the placket and a narrow banded collar, this style has a soft feel to the fabric.

Product Features:

- Short sleeve t-shirt.
- Narrow banded collar with single button placket.
- Soft feel.

Highlights:

- Recycled polyester from post-consumer plastic.

Available In:

XS, S, M, L, XL, 2XL

Certifications:

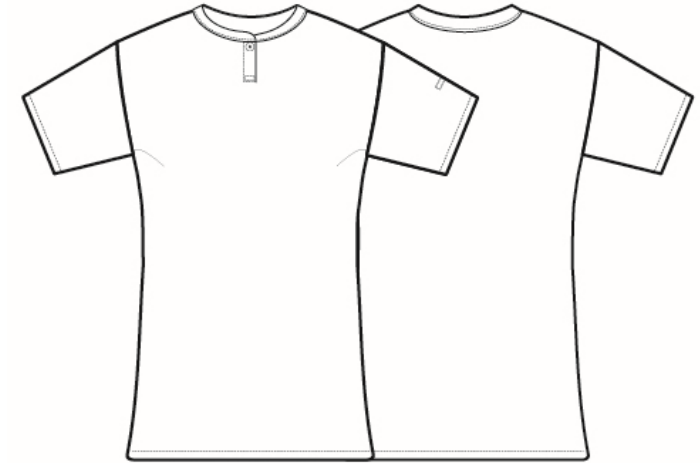


Colours:

Colour	Pantone	C	M	Y	K
Black	Black c	0	0	0	100
White	White	0	0	0	0
Grey Marl *	Cool grey 9	30	22	17	57
Navy Marl	2378	83	63	26	34
Khaki	7536c	11	13	30	32

Fabric:

60% Cotton, 40% Recycled Polyester
 *Grey Marl: 90% Cotton, 10% Viscose, 160gsm



Suggested Decoration:

Screen Print, Transfer Print, Embroidery

Country of Origin:

Bangladesh

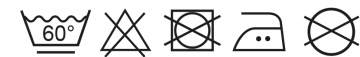
Commodity Code:

6109100010

Features:



Wash Care:



Carton Information:

Sizes	Carton	Pack	SKU's	Carton Weight	Carton Dimensions
All Sizes	36	6	30	8kg approx	60cm x 36cm x 20cm

Garment Sizes:

Size	XS	S	M	L	XL	2XL
Chest to fit"	33	35	37	39	41	43
Chest to fit cm	84	89	94	99	104	109
Chest actual cm	82	88	94	100	106	112
Back length cm	62	64	66	68	70	72

This garment can withstand a high wash temperature, but unless heavily soiled, we recommend washing at 30C to help the environment.