

PR346 Women's Stretch-Fit Cotton Poplin Short Sleeve Shirt

Description

Cotton combined with Elastane makes for a soft, stretchy and comfortable fitted style for ladies. A soft cut-away collar with top button which can be worn formally with a scarf or open collared for a more relaxed look.

Product Features:

- Soft feel and stretch fabric
- Bust and back darts
- Seamless placket
- Curved hem

Available In:

XS, S, M, L, XL, 2XL, 3XL

Certifications:

 Member

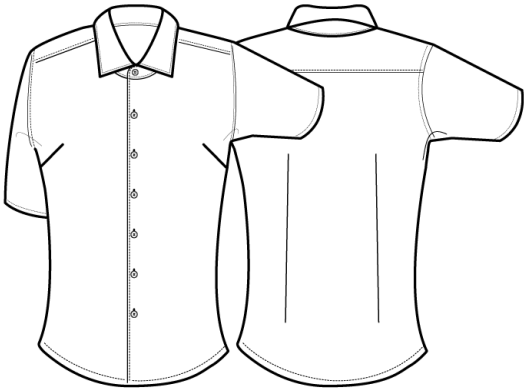
 STANDARD 100 11-55731 Shirley

Colours:

Colour	Pantone	C	M	Y	K
Black	Black c	0	0	0	100
Silver	Cool Grey 7c	20	14	12	40
White	White	0	0	0	0

Fabric:

97% Cotton, 3% Elastane Poplin, 115gsm.



Suggested Decoration:

Screen Print, Transfer Print, Embroidery

Country of Origin:

Bangladesh

Commodity Code:

6206300090

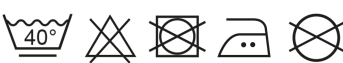
Features:

 COTTON RICH

 MODERN FIT

 STRETCH

Wash Care:



Carton Information:

Sizes	Carton	Pack	SKU's	Carton Weight	Carton Dimensions
All sizes	24	6	21	7.5kg approx.	56cm x 38cm x 16cm

Garment Sizes:

Size	8	10	12	14	16	18	20
Bust to fit"	33	35	37	39	41	43	45
Bust to fit cm	84	89	94	99	104	109	114
Bust actual cm	93	98	103	108	113	118	124
Call size	XS	S	M	L	XL	2XL	3XL
Back length cm	65	66	67	68	69	70	71