

PR386 'Supreme' Oxford Women's Short Sleeve Shirt

Description

Supreme in its nature due to the addition of mercerised cotton, this women's short sleeve oxford shirt is a welcome addition to our corporatewear collection. A special fabric treatment gives the shirt a premium look and feel with colour radiance, fibre stability, shape retention and wash performance. Styled with a button-down collar and single button cuff with back darts for a flattering feminine fit. Featuring a curved hem-line with side seamed gussets to reduce stress on the fabric. Supreme in every sense of the word with style, comfort and quality guaranteed.

Product Features:

- Mercerised cotton for a superior look and feel
- Elastane for stretch and comfort through the fabric
- Button-down collar
- Back darts for a feminine fit
- Side seamed gussets on the hem-line

Available In:

2XS, XS, S, M, L, XL, 2XL, 3XL, 4XL, 5XL

Certifications:



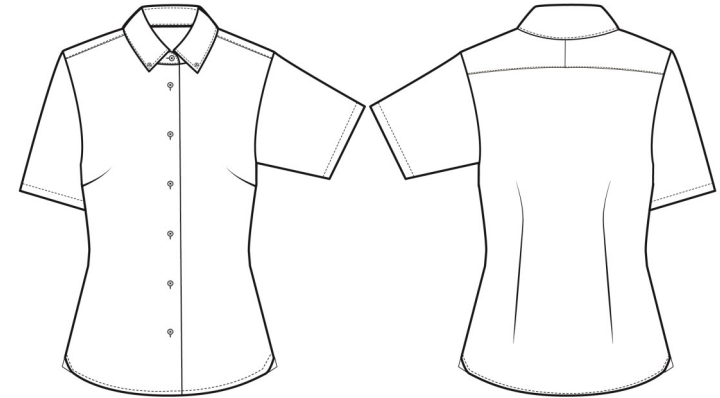
STANDARD
100
11-55731
Shirley

Colours:

Colour	Pantone	C	M	Y	K
Black	Black C	0	0	0	100
Oxford Blue	658c	37	11	0	0
White	White	0	0	0	0
Navy	533c	95	72	15	67
Steel	431c	45	25	16	59

Fabric:

72% Cotton, 25% Organic Cotton, 3% Elastane, 135gsm.



Suggested Decoration:

Screen Print, Transfer Print,

Country of Origin:

Bangladesh

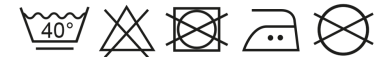
Commodity Code:

6206300090

Features:



Wash Care:



Carton Information:

Sizes	Carton	Pack	SKU's	Carton Weight	Carton Dimensions
All Sizes	24	6	50	6.3kg approx	56cm x 36cm x 39cm

Garment Sizes:

Size	6	8	10	12	14	16	18	20	22	24
Call size	2XS	XS	S	M	L	XL	2XL	3XL	4XL	5XL
Bust to fit"	31	33	35	37	39	41	43	45	47	49
Bust to fit cm	79	84	89	94	99	104	109	114	119	124
Bust actual cm	89	94	99	104	109	114	119	125	133	141
Back length cm	64	65	66	67	68	69	70	71	72	73