

Description

Containing certified recycled polyester, this is a versatile and durable workwear option built for everyday use.

Product Features:

- Contains certified recycled polyester
- Designed for industrial laundering
- Three patch pockets
- Five concealed press stud fastenings
- Smart lapel collar

Available In:

2XS, XS, S, M, L, XL, 2XL, 3XL, 4XL, 5XL

Certifications:

Colours:

Colour	Pantone	C	M	Y	K
White	White U	0	0	0	0

Fabric:

65% Recycled Polyester, 35% Cotton, 195gsm

Suggested Decoration:

Screen Print, Transfer Print, Embroidery

Country of Origin:

Myanmar

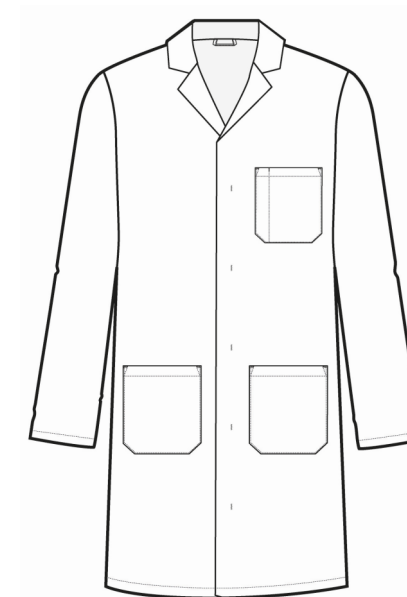
Commodity Code:

6211331000

Features:



Wash Care:

**Carton Information:**

Sizes	Carton	Pack	SKU's	Carton Weight	Carton Dimensions
2XS - 5XL	24	6	10	15kg	60cm x 40xm x 25cm

Garment Sizes:

[illegible]