

PR800 'Selsey' Hydrochecker Jacket

Description

The 'Selsey' jacket is made from Premier's Hydrochecker fabric for a weatherproof jacket. Designed to keep you dry with a fold-away drawcord hood, storm flap, taped seams and adjustable cuffs. Padding through the body for insulation with a cosy microfleece inner layer featuring a hidden zip for embroidery access, so it can be branded. Keep your essentials safe and hands warm with zipped fleece lined pockets. The 'Selsey' is a versatile on -trend workwear jacket for people working across many different industries. Available in two colours and a wide range of sizes.

Product Features:

- Full zip-through with storm flap and hook & loop fastening
- Microfleece lining with hidden zip for embroidery access
- Zipped fleece lined pockets
- Fold-away drawcord hood
- Part elasticated cuff and hem
- Waterproof rating of 5000mm. Conforms to UKCA & CE EN343 1:1

Available In:

XS, S, M, L, XL, 2XL, 3XL, 4XL, 5XL

Certifications:



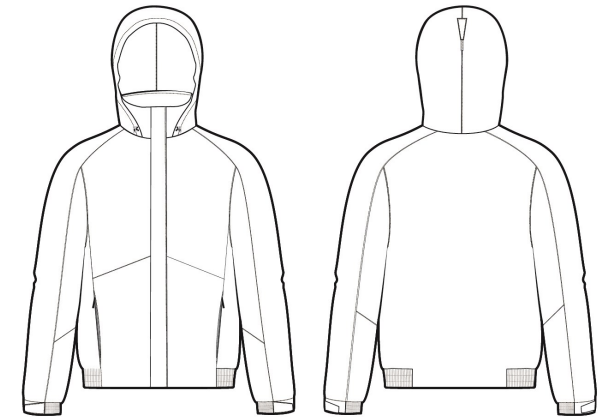
Colours:

| Colour | Pantone | C | M | Y | K |
|--------|---------|----|----|----|-----|
| Black | Black c | 0 | 0 | 0 | 100 |
| Navy | 533c | 95 | 72 | 15 | 67 |

Fabric:

Outer: 100% Polyester + PVC coating, 190gsm.

Inner: Fleece, 208gsm



Suggested Decoration:

Screen, Transfer Print, Embroidery

Country of Origin:

Myanmar

Commodity Code:

6201409019

Features:

HYDROCHECKER



Waterproof Windproof Fleece lining Taped seams

Wash Care:



Carton Information:

| Sizes | Carton | Pack | SKU's | Carton Weight | Carton Dimensions |
|-----------|--------|------|-------|---------------|--------------------|
| All Sizes | 12 | 3 | 18 | 12kg | 60cm x 38cm x 50cm |

Garment Sizes:

| Call Size | XS | S | M | L | XL | 2XL | 3XL | 4XL | 5XL |
|-----------------|-----|-----|-----|-----|-----|-----|-----|-----|-----|
| Chest to fit " | 35 | 38 | 40 | 43 | 45 | 47 | 50 | 53 | 55 |
| Chest to fit cm | 89 | 96 | 102 | 109 | 114 | 120 | 127 | 135 | 140 |
| Chest actual " | 43 | 45 | 48 | 51 | 53 | 55 | 57 | 60 | 62 |
| Chest actual cm | 110 | 116 | 122 | 128 | 134 | 140 | 146 | 152 | 158 |