

PR903 Chef's Long Sleeve Coolchecker® Jacket

Description

A long-sleeve chef's jacket constructed with our very own Coolchecker® fabric. The centre back panel is made from the Coolchecker® fabric which offers exceptional moisture management and wicking properties so chef stays fresh and cool during service. A wrap over fastening with ten self-fabric buttons, a mandarin collar and a useful double pen pocket on the left arm.

Product Features:

- Coolchecker® mesh back panel
- Double pen pocket
- Mandarin collar
- Self-fabric button fastening

Available In:

XS, S, M, L, XL, 2XL, 3XL, 4XL

Certifications:

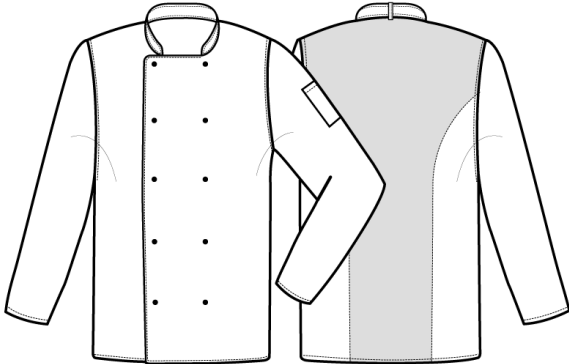


Colours:

Colour	Pantone	C	M	Y	K
Black	Black c	0	0	0	100
White	White	0	0	0	0

Fabric:

65% Polyester, 35% Cotton Twill, 170gsm.



Suggested Decoration:

Screen Print, Transfer Print, Embroidery

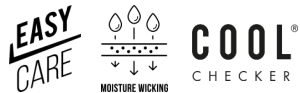
Country of Origin:

Bangladesh

Commodity Code:

6211331000

Features:



Wash Care:



Carton Information:

Sizes	Carton	Pack	SKU's	Carton weight	Carton dimensions
All sizes	24	6	16	10kg	60cm x 40cm x 20cm

Garment Sizes:

Call size	XS	S	M	L	XL	2XL	3XL	4XL
Chest to fit"	30	34	38	42	46	50	54	58
Chest to fit cm	77	87	96	107	117	126	136	146
Chest actual cm	96	104	112	120	128	136	144	152
Back length cm	76	76	76	76	76	76	76	76