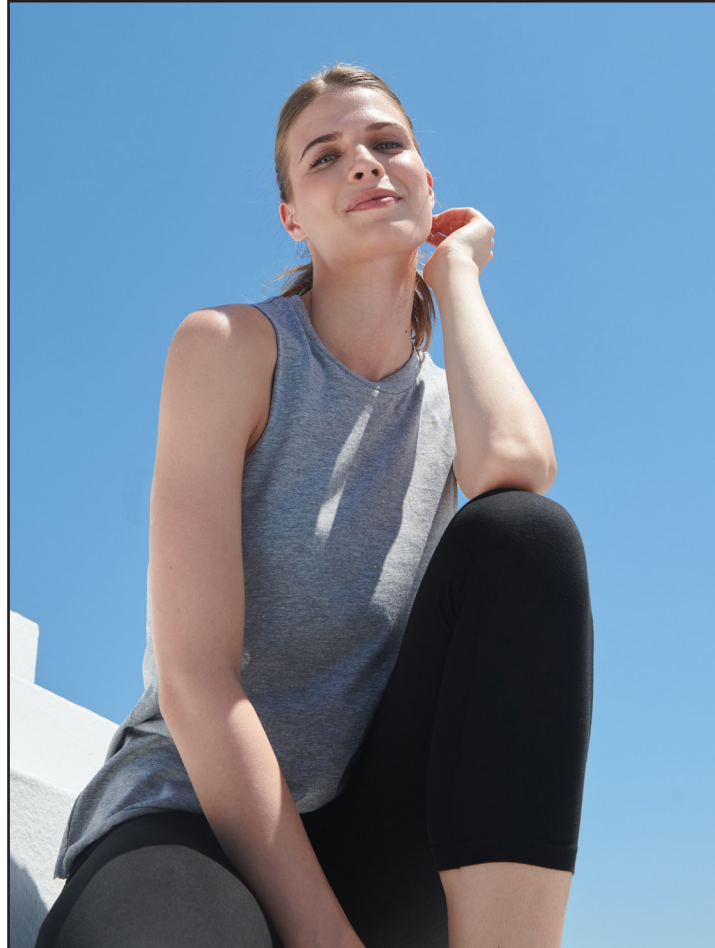


SK232
WOMEN'S HIGH NECK SLASH ARMHOLE VEST



Fabric: 60% Cotton, 40% Polyester
 Weight: 140gsm
 Sizes: XS-2XL
 Carton: 72
 Country of Origin: Bangladesh
 Commodity Code: 61091000

- Stretchy ribbed crew neck.
- Raw edge slash armhole and hem.
- Matches men's SF232.
- Removable SF label, for easy re-branding



- Wash at 40 degrees synthetic
- Wash dark colours together
- Reshape whilst damp
- Do not tumble dry
- Dry out of direct sunlight
- Iron on reverse of decoration

SK232

WOMEN'S HIGH NECK SLASH ARMHOLE VEST

Garment Measurements	XS	S	M	L	XL	2XL
Chest-cms	42	45	48	51	53	55
Length-cms	59	62	65	68	71	74
Armhole-cms	26	27	28	29	30	31
To Fit Guide						
Chest-ins	30-32	32-34	34-36	36-38	38-40	40-42
Chest-cms	76-81	81-86	86-91	91-96	96-101	101-107
Waist-ins	26	28	30	32	34	36
Waist-cms	66	71	76	81	86	91

Black



Heather Grey
34% Black



White

