



S250F WOMENS BODYFIT BASE LAYER SHORTS

Origin: China

Fabric

200g/m² 80% Nylon 20% Elastane



Commodity Code: 6104630000

Key Features/Tech

Breathable, Quick Dri

Features

- Reflective print 2 positions
- Flat lock stitch side seams
- Elasticated waist band and draw cord
- Quick Dri treatment performance fabric for fast wicking moisture control: keeps skin cool & comfortable
- Contour fit panels with contrast stitch down leg
- Micro soft athletic stretch fabric
- Inner key pocket
- Also Available in Mens [S250M](#) and Junior & Youth sizes [S250J](#)

Decoration Type

Embroidery, Transfer Print

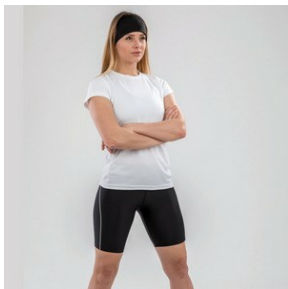
Decoration Access

Open

Colours



Black
(BLK)



Care Instructions



USP



SIZES

SIZES	XS/S	M/L	XL/2XL
UK	8/10	12/14	16/18
EURO	36/38	40/42	44/46

Carton Qty: 20

Pack Qty: 5

SKU Qty: 3