

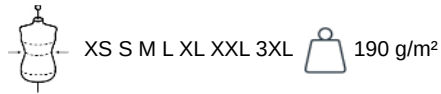


WK739

Ladies' Day To Day trousers

- Extremely hard-wearing and washable at 60°C.
- Day To Day Collection : everyday professional attire.
- Complete work outfit and mix-and-match colours.

65% polyester/35% cotton. Washable at 60°C. 2 Italian side pockets. 2 rear piped pockets with reinforced stitching. Zip and button fastening. Elasticated waist for extra comfort with loops. Rear hanging loop inside waist. Ideal for daily use.



Certifications



More information

Logistic



1



20

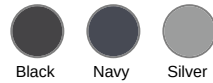


PK - Pakistan

Customs code



62046318



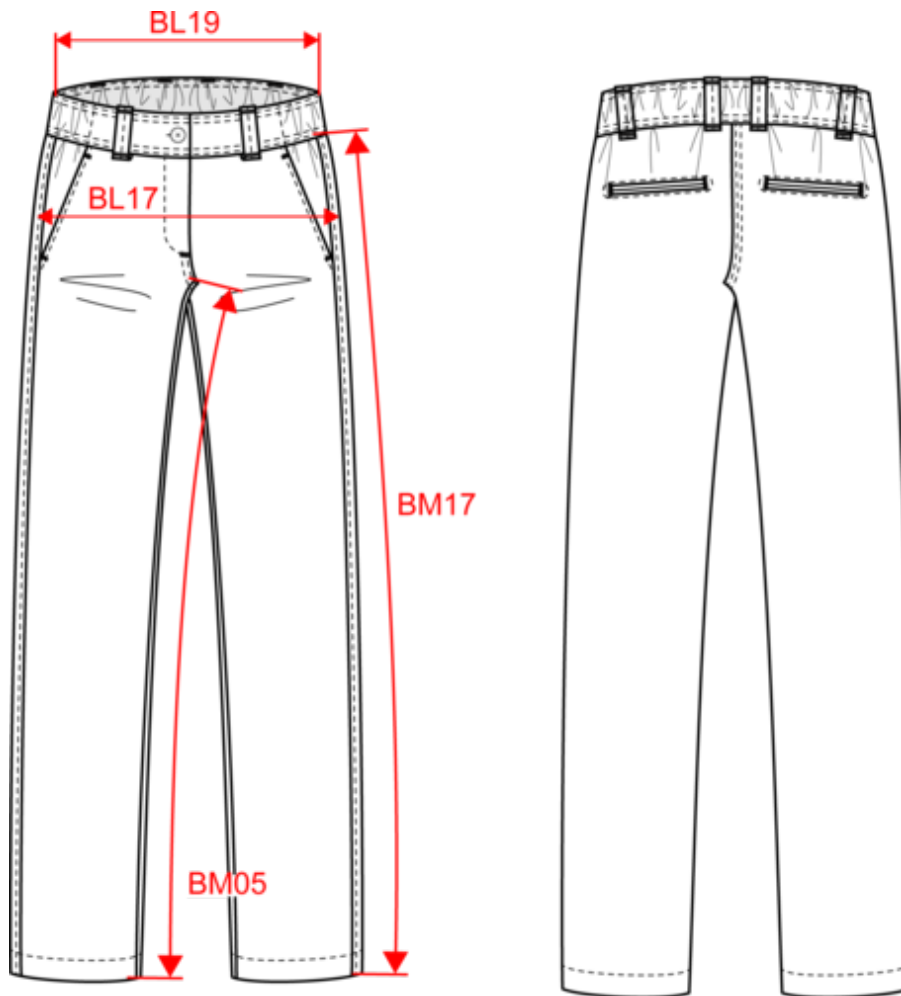
Also available in version



WK738

Ladies' Day To Day trousers

Dimensions (cm)



Measurements in cm	XS	S	M	L	XL	XXL	3XL
BL17 - 1/2 hip width (measured parallel to waistband)	43.00	46.00	49.00	52.00	55.00	58.00	61.00
BL19 - 1/2 semi-elasticated waist width (buttoned up and front band over back band)	32.00	35.00	38.00	41.00	44.00	47.00	50.00
BM05 - Inseam length	82.00	82.00	82.00	82.00	82.00	82.00	82.00
BM17 - Side length (waistband excluded)	101.50	102.25	103.00	103.75	104.50	105.25	106.00



WK739

Ladies' Day To Day trousers

Colours information



Black

RVB : 35,35,37
Pantone C : Black
Pantone TCX : 19-4004TCX



Navy

RVB : 41,46,56
Pantone C : 433C / -
Pantone TCX : 19-4012TCX / -



Silver

RVB : 126,128,128
Pantone C : 877C
Pantone TCX : 17-00000TCX

Logistic



1



20

Sizes	Width (cm)	Height (cm)	Length (cm)	Net weight (kg)	Gross weight (kg)	Pieces/Box	Pieces/Bundle
XS	40.00000	22.00000	60.00000	7.25000	8.75000	20	1
S	40.00000	22.00000	60.00000	7.50000	9.00000	20	1
M	40.00000	22.00000	60.00000	7.75000	9.25000	20	1
L	40.00000	22.00000	60.00000	8.25000	9.75000	20	1
XL	40.00000	22.00000	60.00000	8.50000	10.00000	20	1
XXL	40.00000	22.00000	60.00000	9.00000	10.50000	20	1
3XL	40.00000	22.00000	60.00000	9.50000	11.00000	20	1